

## Receiver

Society  
Reference  
Address  
Phone  
Fax  
E-mail

## From

LAFIPA  
G.M  
Dzelzav as 120G  
67506650  
-  
birojs@lafipa.lv

## Item n° :

60150945

## Model :

EVOPLUS 110/180 XM

## Pump data

Pressure rating : 16 bar  
Min. fluid temperature : -10 °C  
Max. fluid temperature : 110 °C  
EEI : ≤ 0,22

## Minimum suction head :

Temperature °C 90 100  
Minimum suction head : m 20 25

## Requested data

Flow : 3,50 m³/h  
Head : 8,00 m  
Fluid (%) : Water  
Fluid Temperature : 20 °C  
Density : 0,99819 kg/dm³  
Kinematic viscosity : 1,0004 mm²/s  
Vapor pressure : 2,20 kPa

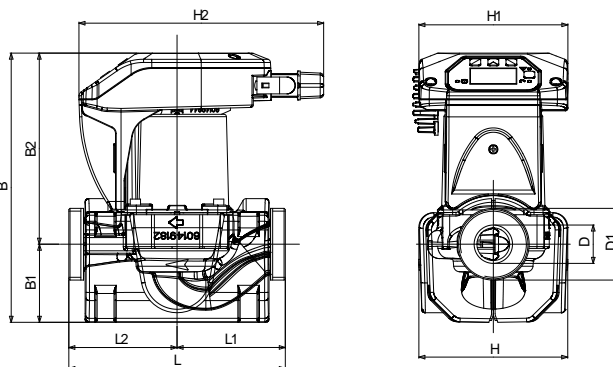
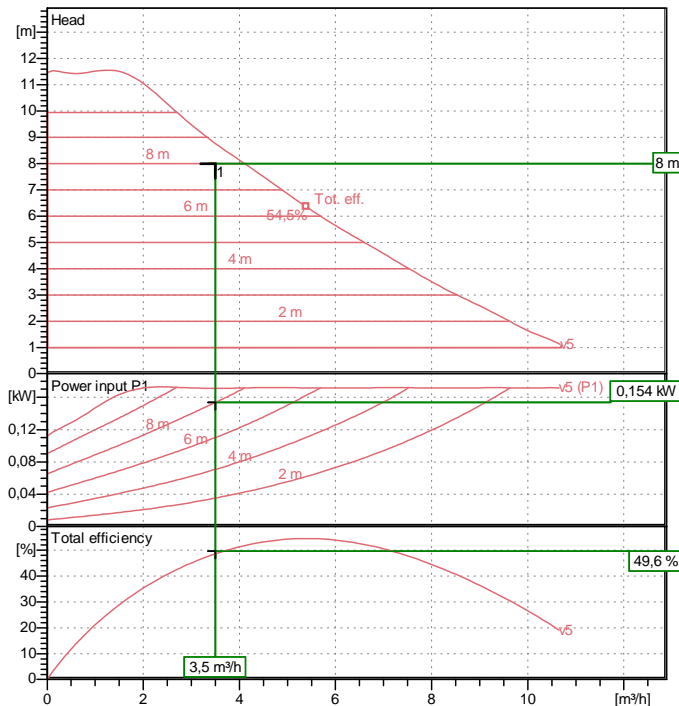
## Hydraulic data (duty point)

Flow : 3,50 m³/h  
Head : 8,00 m

## Materials

Pump body Cast iron 250 UNI ISO 185 - CTF  
Impeller Technopolymer  
Motor shaft Alumina  
Seal ring EPDM  
Motor casing Die cast aluminium  
Closing flange Stainless steel  
Thrust ring support EPDM

## Curve tolerance according to ISO 9906



## Motor data

Motor brand : DAB  
Power input P1 : 0,17 kW  
Rated voltage : 1~ 220-240 V 50 Hz  
Nominal current : 1,18 A  
Degree of protection : IP 44

## Dimensions in mm

B	224	H	124	L2	90		
B1	65	H1	124				
B2	159	H2	204				
D	32	L	180				
D1	2" G	L1	90				

Weight : 4,7 kg

## Pump connection

Suction side : 2" G  
Discharge side : 2" G